

FINIALS & POLE BASES

(suggested usage only)

DESIGNERS AND MANUFACTURERS OF
URBAN STREETWARE AND LIGHTPOLES

GOLDSPAR



Rotating Finial



Standard Mushroom

For pole tops 45Ø to 60Ø
Usage: Standard poles 6m to 9m
Material: Cast aluminium
Finish: Cast or powder coated



Ellipsoid

For 76Ø pole tops
Usage: Flag poles above 9m
Material: Spun aluminium
Finish: Anodised or powder coated



Bullet

For pole tops 50Ø, 60Ø, 80Ø, 100Ø
Usage: Banner poles
Material: Spun aluminium
Finish: Anodised or powder coated



Sphere

Sphere 100Ø
Usage: Poles over 9m
Material: Cast aluminium
Finish: Cast or powder coated



Minaret

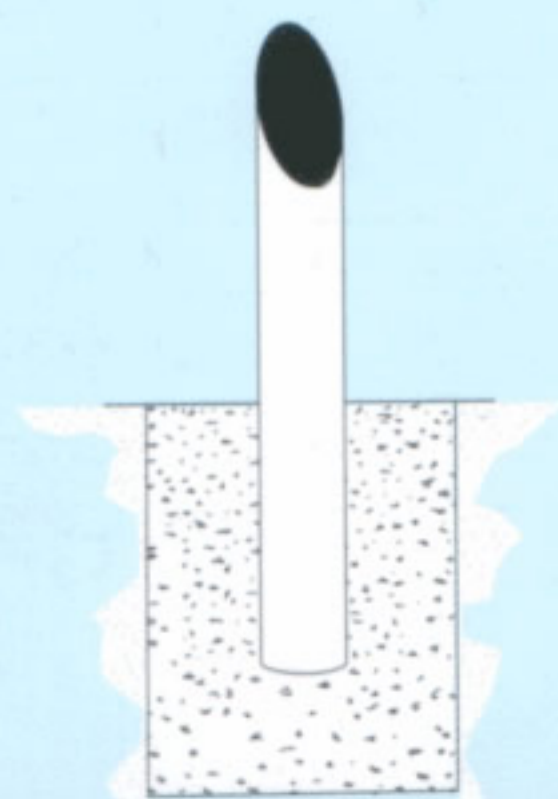
For pole tops 50Ø to 76Ø
Usage: Banner poles and light poles
Material: Cast aluminium
Finish: Cast or powder coated



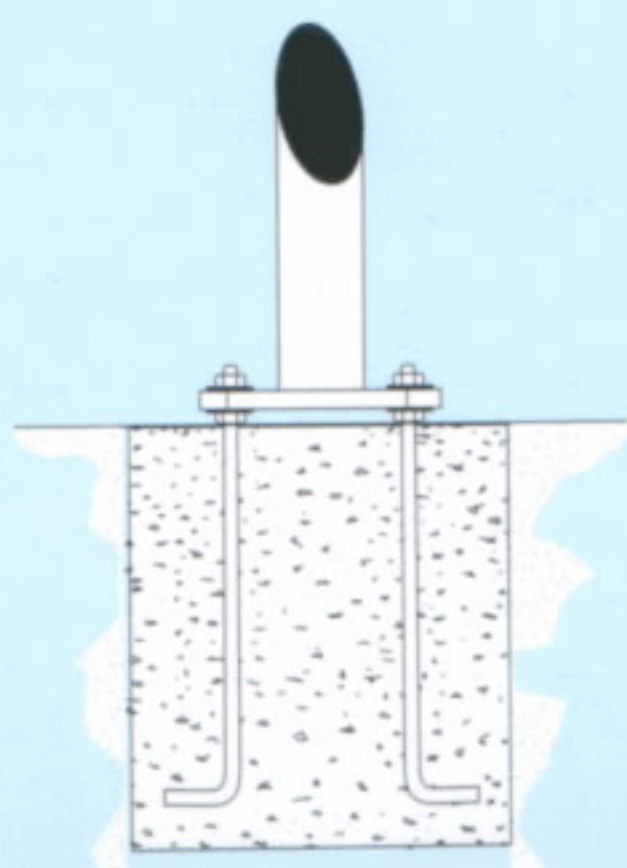
Extra

Extra 150Ø. For pole tops 60Ø to 100Ø
Usage: All poles
Material: Cast aluminium
Finish: Cast or powder coated

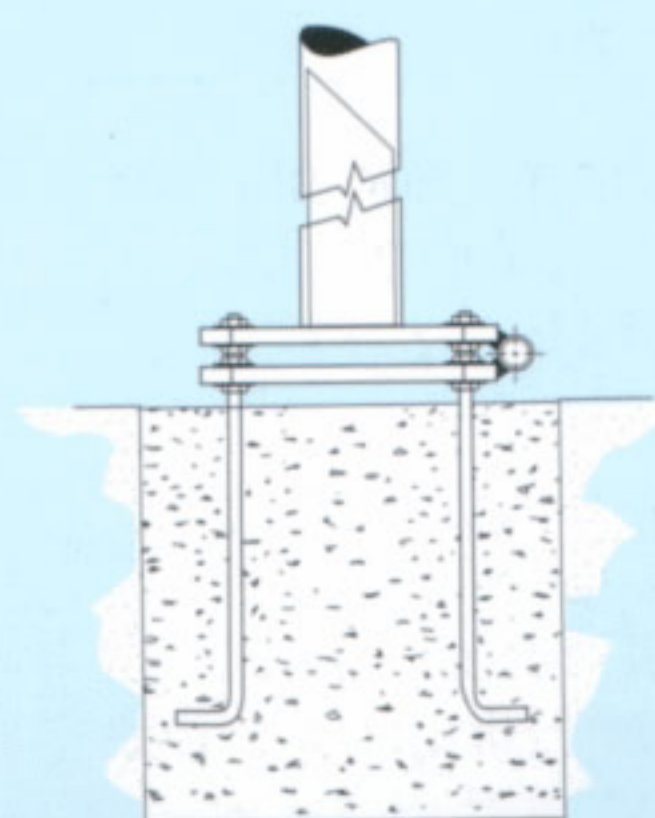
In-ground fixed spigot A
Galvanised, embedded in ground



Galvanised base plate spigot B



Hinged base plate spigot C
for lowering and servicing



In-ground socket D (with lockable
cover) for removable spigot

